

Construction Path of College Students' Study Style Based on Big Data Analysis

Weiyan Zhang, Long Hu*

School of Physical Education, Hunan University of Arts and Science, Changde, Hunan, 415000, China

hu775924039@qq.com

**Corresponding author*

Keywords: Big Data Analysis, Ordinary Colleges and Universities, Study Style Construction, Ideological Education

Abstract: The construction of study style is a constant theme in the education reform and development of ordinary colleges and universities. The excellent degree of study style is an important condition to measure the quality of education, and the excellent study style of college students is the focus of improving the quality of colleges and universities. This paper adopts the interview method, which uses big data analysis technology to count the interview data information. This paper investigates the current situation of the school's study style by interviewing 200 college students in a certain school about the current situation of class examinations and ideological and moral courses. From the interview results, it can be seen that 42% of the college students are using their mobile phones during class, and 52% of the students listen carefully. % of college students believe that cheating in exams is a normal phenomenon, and the number of ideological education courses for college students in different grades is different. Senior students are offered once every semester. According to these situations, we know that there are major problems in the school's style of study and put forward this problem. Study style construction path.

1. Introduction

College students are the hope of promoting social development. If the learning atmosphere in colleges and universities is not good, then students will be very lucky to have inertia and ideological deviation. In order to further improve the quality of running schools, improve the comprehensive quality of students, and improve the popularity of schools, ordinary colleges and universities must fully grasp the focus of the construction of study style.

At present, there have been good research results on the path of study style construction of college students based on big data analysis. For example, a scholar analyzed the factors that affect the construction of college students' style of study, mainly including the imperfect competition mechanism in society, which leads to the loss of students' employment, which have seriously impacted the construction of the learning atmosphere in colleges and universities [1]. An education scholar believes that if we want to build a good style of study, we must start from the moral education of students, start from cultivating students' moral quality, and provide fields for students'

development in the process of education and teaching, conform to the laws of students' development, and guide students. Students develop autonomously and encourage the desire for knowledge of human nature. In the process of educating and teaching students, efforts should be made to cultivate students' collective consciousness, use positive and effective teaching methods to stimulate students to continuously establish new goals in learning, and focus on cultivating a good collective style [2]. Although the research on the construction path of college students' study style in ordinary colleges and universities has achieved good results, in order to improve the teaching quality of colleges and universities, we must start from the style of study.

This paper first analyzes the influencing factors of college students' study style construction from four aspects: students, teachers, and schools, and then proposes a big data mining technology, uses this technology to analyze the current situation of college students' style of study, and puts forward some points for the problems of study style in colleges and universities. Suggestions for the construction of the style of study [3].

2. Influencing Factors of Study Style Construction

2.1 Influencing Factors of College Students' Study Style Construction in Ordinary Colleges and Universities

(1) Student factor

Poor behavioral adaptability of college students and unscientific study methods are the main factors that form a bad style of study. Students are the subject of the school, the object of education, and the core of the construction of the style of study. For freshmen who have just entered school, their self-learning ability is not high, their organizational discipline is poor, and their self-control ability is poor [4]. During this period, it is particularly important to change from the heavy test-oriented education in high school to loose independent learning, which is also a big test for the students themselves. If the transformation is not good, it will have a great impact on the students themselves. After entering the university, students relax their demands on themselves and slack off. When there is a gap between the ideal and the reality, it adopts a passive and passive way of dealing with it. When encountering a problem, it retreats, does not take the initiative to solve it, and does not actively respond. Over a long period of time, a certain inertial thought has been formed. Some students do not agree with the major they are studying and do not understand the professional curriculum and future employment directions and fields. In action, they cannot consciously abide by the behavioral standards and moral norms of college students, lack good organization and discipline, and have a loose learning attitude. Some students cannot properly handle the relationship between study and free time, and cannot properly handle the relationship between study and love [5-6].

(2) Teacher factors

Teaching is the top priority of every university. Some colleges and universities do not have a stable team of teachers with good teachers, and to some extent cannot create a good teaching environment and a good learning atmosphere for students. In addition, university teachers usually leave after class, so they don't have more time to tutor students, and they can't summarize for students after the course [7].

(3) School factors

Schools are the main places where students study and live and have a direct impact on students. The management of college students is not enough. Many colleges and universities pay more attention to the construction of hardware facilities. They want to improve the learning and living conditions of students, but ignore the management of school students' learning [8]. Due to the weak self-learning ability and self-discipline of ordinary college students, the learning atmosphere is not strong, the learning efficiency is not high, and the study style construction is not in place. In

addition, the evaluation mechanism of some colleges and universities is not perfect, and some students do not know how to learn independently, and they only think that everything will be fine if they do not pass the exam, which leads to students spending a lot of time in mechanical practice for exam preparation. What's more, they take risks and cheat in exams [9].

(4) Social factors

Today's society has built a good platform for college students to improve their own conditions, but some bad atmospheres in the society have also had a negative impact on college students. First, social corruption has a great impact on students. Second, the lower wages of intellectuals have weakened the motivation of students to learn. The market economy leads some students to want to enter the society as soon as possible and engage in economic activities, to obtain better remuneration. It is believed that it takes too long to study hard to realize economic value, and it is too anxious for quick success. Thirdly, anxious for quick success and instant benefit is that college students are looking for the last and cannot bear the loneliness of learning. Fourth, the employment pressure is high. The continuous expansion of college enrollment for many years has led to an increase in graduates and virtually increased employment pressure. Coupled with the fierce competition in various industries, the survival of the fittest makes college students have negative emotions about learning [10-11].

2.2 Big Data Analysis Technology

There is a lot of information on the Internet. To obtain valuable information from the massive information, it can be realized by big data analysis technology [12]. This paper uses big data analysis technology to mine the learning situation of college students and selects 200 students as samples. When analyzing the data, it is necessary to detect whether there are abnormal values in the data. The formula is as follows:

$$p(|x - \mu| > k\delta) \leq 1/k^2 \quad (1)$$

$$f(x) = \frac{1}{\sqrt{2\pi}\delta} \exp\left(-\frac{x - \mu}{\delta^2}\right) \quad (2)$$

Among them, $f(x)$ is the probability density function, μ is the standard deviation, δ^2 is the variance, k usually goes to 2, 3, 4, and x is the sample.

3. Experimental Research

3.1 Research Purpose

The construction of study style in ordinary universities has gradually been paid attention to by the national education department. How to strengthen the construction of study style in colleges and universities has become an important aspect of the development of colleges and universities. This paper mainly summarizes and summarizes the problems existing in the style of study in colleges and universities, and aims to propose a targeted path for the construction of the style of study in view of the relevant problems in colleges and universities.

3.2 Research Methods

This paper mainly adopts the interview method, and the interview objects are 200 college

students from a common university. It is precisely because there are few students, so 10 interviewers are arranged to interview these 150 students about the construction of study style. Each interviewer is responsible for 20, Finally, the interview results of the students are summarized and analyzed by big data technology.

4. Analysis of Experimental Results

4.1 The Current Situation of Ordinary College Students' Study Style Based on Big Data Analysis

(1) Distribution of investigators

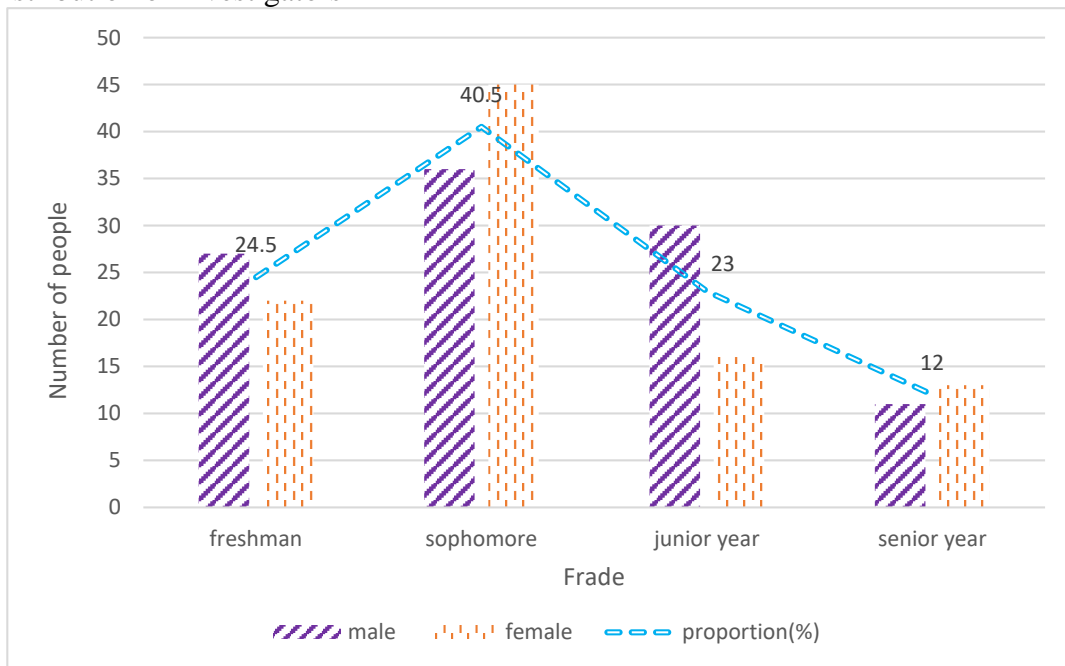


Figure 1: Distribution of survey respondents.

As shown in Figure 1, the 200 college students selected in this experiment spanned the entire college grade, including 49 freshmen, accounting for 24.5% of the respondents; 81 sophomores, accounting for 40.5%; the number of students is 46, accounting for 23% of the total number; the senior year has 24 students, accounting for 12%. Sophomores make up the largest proportion of them, because sophomores have been in college for several semesters and have more time for interviews than juniors and seniors.

(2) Current situation of study style

From Figure 2, it can be seen that 42% of the 200 students are playing with electronic products during class, while only 26.5% of the students listen carefully, and even 13.5% of the students will be absent from work, and 12% of the students will chat during class. Classes are for learning, not for students to use this time to do other things, but there are very few students studying in class, and most of them do things that have nothing to do with learning. If the classroom atmosphere in colleges and universities has always been like this, then this kind of the atmosphere of learning will be more rampant.

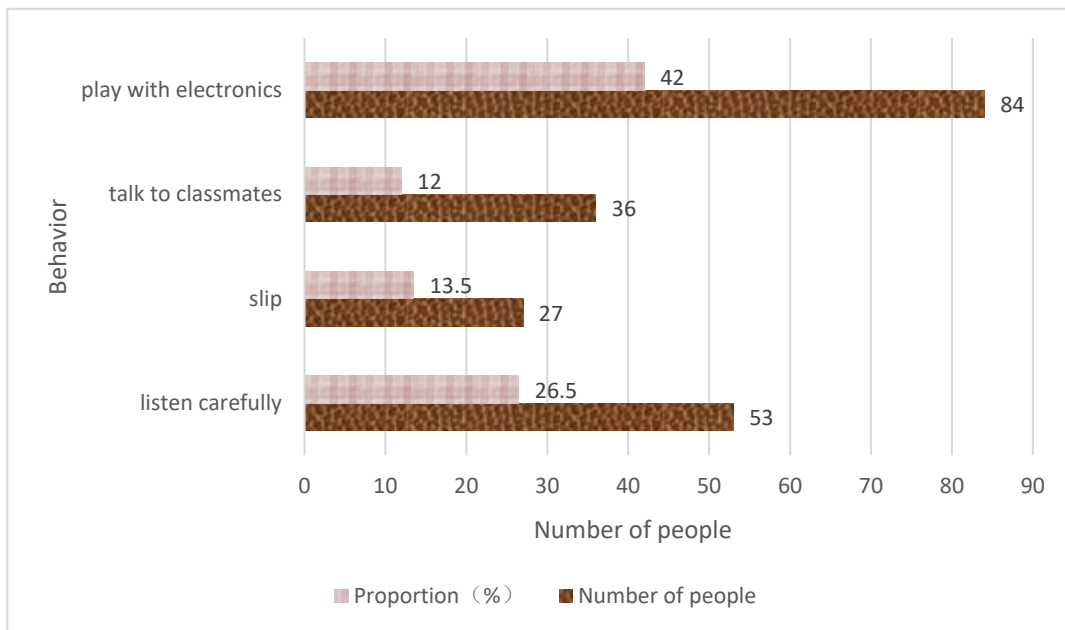


Figure 2: Number of people with different behaviors during the classroom

Table 1: Perceptions of cheating in exams

	Number of people	Proportion (%)
Must be avoided	65	32.5
Understandable	31	15.5
Normal phenomenon	104	52

From Table 1, it can be seen that 32.5% of the students believe that cheating in exams must be avoided, and 15.5% of them are understandable. More than half of the students think that this is a normal phenomenon, which also shows that many college students do not have the correct values and need to strengthen their ideological and moral values. educate. Nowadays, the exams in many colleges and universities are just formal, rather than really assessing what students have learned. Students usually have no intention of taking classes. They only review before the exam, or even do not review directly. Exams are not considered important. If the school continues to ignore student cheating, it will make the idea of cheating more rampant, and the school should formulate stricter rules to extinguish the flame of student cheating. At the same time, invigilators must be strictly disciplined in the examination room, otherwise it will encourage students to develop the habit of cheating and seriously affect the construction of the study style.

In addition to the above, we also learned about the number of ideological education lectures held by the school for college students. Generally speaking, freshmen will hold about 6 times per semester, sophomore students will hold about 4 times per semester, and junior students will hold 3 times per semester. About 1 time per semester for senior students. Ideological education for students is an important step to strengthen the construction of study style. Students must establish the concept of a good atmosphere for study and study in order to improve the study atmosphere.

4.2 The Path of Study Style Construction

(1) Create a strong learning atmosphere

First of all, we set an example for college students to learn from, and use the people around them to inspire college students. The mutual influence between classmates cannot be ignored. Therefore, to give full play to the influence of peers, the campus network should set up a "learning role model"

section to praise outstanding students and progressive students, and evaluate the classes with excellent learning and comprehensive excellence every year. ; You can also shoot documentaries of outstanding students' postgraduate entrance examination process through electronic screens in the cafeteria, publicity boards in front of dormitories, and teaching buildings, etc.; or share the stories between students and learning through campus radio, etc., through multichannel publicity. Motivate students to learn. Third, carry out campus theme learning and education activities to attract college students to activities. The organizer of the activity should carry out in-depth research work before the activity, carefully plan the activity according to the feedback from the students, and try to make every link of the activity attract the students and let the students experience the fun of the learning activity. Finally, to ensure that students have a "head-up rate" in class, the school conducts class inspections from time to time and eliminates behaviors such as playing with mobile phones and sleeping in class.

(2) Improve the organizational construction of study style construction

Colleges and universities should set reasonable goals and directions according to their own school-running philosophy, and create an excellent learning atmosphere. The construction of the style of study is not an overnight thing. Colleges and universities should formulate a long-term plan, carry out the construction of the style of study in an organized and targeted manner, and incorporate the construction of the style of study as a key point into the overall development strategy of the school. All colleges and departments should conscientiously implement the requirements, stimulate the vitality of independent teaching, and establish a complete management responsibility chain; all departments in colleges and universities should have a clear division of labor and clear rights and responsibilities, but they should not blame each other for the "fuzzy areas" in the division of labor, and should strengthen work synergy, complement each other, strengthen coordination between departments, and build a good style of study through good organizational construction.

(3) Strengthen ideological and political education

Ideological and political education is a purposeful and planned education and transformation of college students based on national policies and ideological theories, using certain moral thoughts, political theories, and other concepts, so that college students' ideological awareness is more in line with social needs. A kind of time activity. In order to realize the people-oriented concept, we must pay attention to the personality and personality differences of college students, and truly care about every student. Taking human nature as the starting point, giving full play to and mobilizing the subjective initiative of college students, emphasizing respect and understanding for college students, thoroughly implementing the student-oriented theoretical thinking, and putting student education in the first place, in order to improve student performance, strengthen Students' ideological education is the goal.

5. Conclusions

This paper uses big data analysis technology to study the study style of college students in ordinary colleges and universities. It takes 200 college students from a certain college as the interview objects. Through the interviews with them, it is learned that there are many students who are absent from the class and do not listen to the lectures, and many students recognize the phenomenon of cheating in exams. This shows that colleges and universities do not pay attention to the construction of the style of study and do not provide a good learning environment for students. Based on this, this paper proposes a path for the construction of the style of study, hoping to provide reference for the construction of styles of study in various colleges and universities.

References

- [1] Safa, M., Hill, L. (2019) *Necessity of big data analysis in construction management. Strategic Direction*, 35(1):3-5.
- [2] Goudot, F.X., Msadek, S., Boukertouta T., et al. (2021) *Routine use of natriuretic peptides: Lessons from a big data analysis: Annals of Clinical Biochemistry*, 58(5):481-486.
- [3] Massobrio, R., Nesmachnow, S., Tchernykh, A., et al. (2018) *Towards a Cloud Computing Paradigm for Big Data Analysis in Smart Cities. Programming and Computer Software*, 44(3):181-189.
- [4] Hargrave, L., Kitch, C. (2021) *Life on Campus: Life Magazine's "College Girl" as an Ordinary and Ideal Symbol of America in the 1930s. Journalism History*, 47(2):1-19.
- [5] Mohammadi, M., Sanagoo, A., Kavosi, A., et al. (2018) *Association of Parenting Style with Self-efficacy and Resilience of Gifted and Ordinary Male High School Students in Sari, Iran. Journal of Clinical and Basic Research*, 2(3):25-32.
- [6] Mezi, M., Dewantara, J.A. (2020) *Implementation of Character Education in the Student Council. Jurnal Basicedu*, 4(3):765-774.
- [7] Vilorio, A., Gonzalez, I., Lezama, O. (2019) *Learning Style Preferences of College Students Using Big Data. Procedia Computer Science*, 160(3):461-466.
- [8] Wang, L. (2020) *"Class Characteristic Project Construction" to Promote Study Style Construction Practice—Take College of Food Science of Heilongjiang Bayi Agricultural University as an Example. Open Journal of Social Sciences*, 08(2):32-38.
- [9] Hua, J., Wu, P.Y., Chen, Z., et al. (2018) *Construction of the Style of Study in Colleges and Universities in the New Period. Asian Agricultural Research*, v.10 (06):102-106.
- [10] Azmi, S., Noor, M., Mohamed, H. (2018) *Construction of TVET M-Learning Model based on Student Learning Style. International Journal of Advanced Computer Science and Applications*, 9(12):1-6.
- [11] Cho, S.R. (2019) *Construction of Visual Reality and Inherent Spectator - A Study on the Spectator-Subject in the Screen-installation Style Art. Journal of Contemporary Art Studies*, 23(2):113-134.
- [12] Salazar, M.P., Valenzuela, D., Tironi, M., et al. (2019) *Construction of Adaptive Assessments Based in the Learning Style of the Students. Tapuya Latin American Science Technology and Society*, 2(4):1-21.